



Accu-Chek® Inform II system
Professional glucose testing for the wireless age

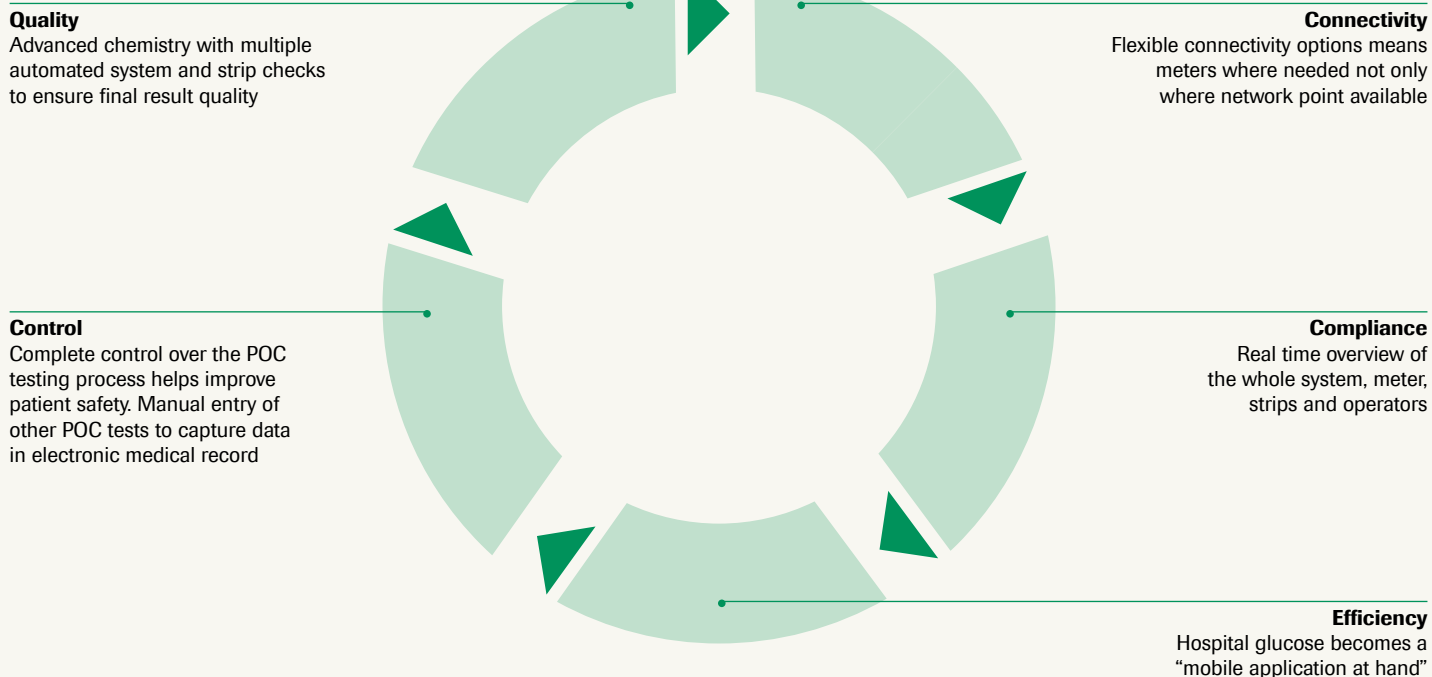


The Accu-Chek® Inform II system

Real time control



The Accu-Chek® Inform II System overview



Accu-Chek Inform II system components

Accessory box

Convenient storage and transport of meter and consumables



Lancets

A pioneering single-use lancing device offering three adjustable depth settings



Code key reader

Entry of strip lot information into device. Ensures only approved test strips are used for testing



cobas IT 1000 application



Base Unit

Recharges meter battery. Allows for the transfer of data to and from the data management system



Test strips

0.6 μ L sample size
5 second test time
End dosing for easier testing



Test strip vial

Flip top vial to maintain integrity of test strips
18 months open vial stability



Control and linearity solutions

Ensures function and accuracy
2 levels of controls/
6 levels of linearity





Connectivity benefits in your hospital

Control

- Integrated operator training, management and certification for Accu-Chek Inform II and all Roche POCT devices in a single solution

Quality

- Fully automated testing procedure can reduce error potentials

Connectivity

- Compatible with hospital WiFi communication standards, allowing for flexibility in implementation
- Wireless supports multiple security protocols to ensure the integrity of patient data

Compliance

- Complete audit trail of meter/strips/user/QC related to every result available
- Automated transfer of patient and operator data to meters and IT system

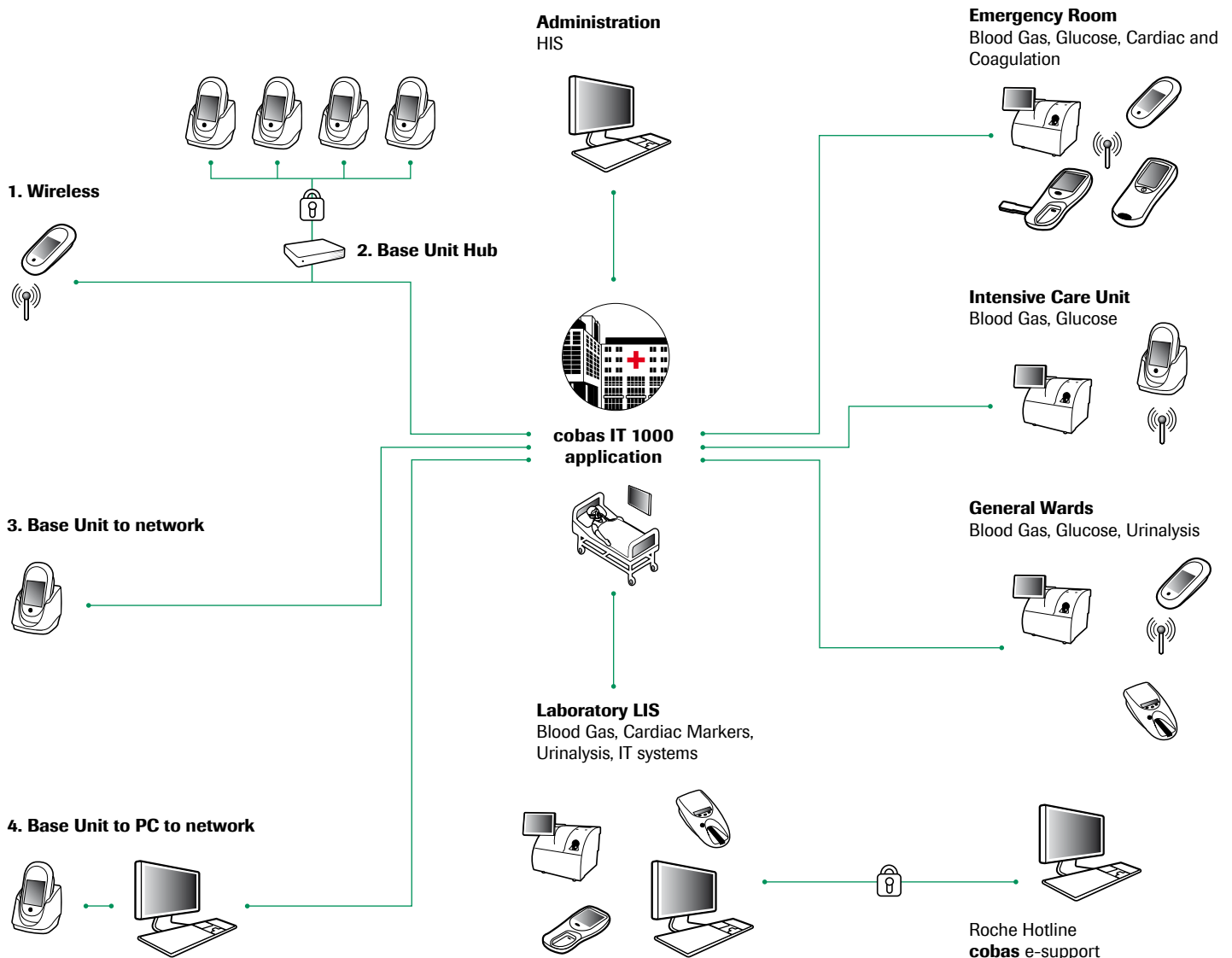
Efficiency

- Central management and upload of strip lots
- Tailored e-learning and automated re-certification concept reduces training burden
- Other test entry captures and stores results for multiple POC tests for enhanced efficiency

Accu-Chek® Inform II connectivity

Highest flexibility to meet the needs of all networks

4 Accu-Chek connectivity methods



cobas Point-of-Care

Flexible solutions designed to meet your needs

Accu-Chek Inform II system

Connected blood glucose meter with wireless functionality



cobas b 221 POC system

Multiparameter blood gas, electrolyte, COOX and metabolite analyzer



Reflotron Plus system

17 clinical chemistry parameters



cobas IT 1000 application



CoaguChek XS Pro system

Efficient, convenient and rapid PT/INR testing



cobas h 232 POC system

Rapid determination of troponin T, NT-proBNP, D-dimer, CK-MB and myoglobin



Urisys 1100 system

Automated rapid visual Urinalysis



3rd party instruments

More than 45 drivers for the most common requested non-Roche analyzers



Offering you control through cobas POC IT solution:

• cobas IT 1000 application

Complete management of POC testing

• cobas bge link software

Like standing in front of your blood gas analyzer

• cobas academy

Your knowledge and competence center

• cobas e-services

Remote support and troubleshooting





COBAS, LIFE NEEDS ANSWERS, ACCU-CHEK
and ACCU-CHEK INFORM are trademarks of Roche.

©2014 Roche

Roche Diagnostics International Ltd
CH-6343 Rotkreuz
Switzerland
www.cobas.com

Accu-Chek® Inform II meter

The first wireless hospital glucose meter

Integral barcode scanner

Advanced bar code scanning for accurate patient ID confirmation

Test strip port

Allows easy dosing of the Accu-Chek Inform II test strip

Cover

Meter cover withstands robust cleaning and disinfection

Touch screen

Allows for easy entry of information including patient ID and operator ID

Flexible connectivity

Hardwire base unit or base unit hub to network or WLAN enabled for immediate transfer of patient results to the hospital medical record

Battery

50 tests after 4 hour recharge

Code key reader

Centralized entry of strip information into meter enables central control ensuring only approved test strip lots are used for testing



Accu-Chek® Inform II meter

Technical specifications

Specification	Meter
Height	44 mm / 1.73 in
Width	95 mm / 3.74 in
Length	193 mm / 7.60 in
Weight	347 g (with rechargeable battery)
User interface	Touchscreen and barcode scanner
Result memory	At least 1,000 results
Operating temperature (review functions only)	3 to 50 °C (37 to 122 °F)
Storage temperature	5 to 40 °C / 41 to 104 °F at 10 to 85% RH (non-condensing)
Humidity (operating)	10 to 90% RH (non-condensing)
Air pressure	0.7 to 1.06 bar / 70 to 106 kPa
Input voltage	+ 7.5 V DC
Input frequency	DC
Input current	1.7 A (max)
Battery	Lithium-ion rechargeable (8 hr to full charge)
Tests	50 tests after 4 hours recharge

Key technical features

First truly wireless hospital glucose meter with optional in-built WiFi card

No need to dock the meter to transmit results

Helps to enable faster therapeutic decision making to improve patient care

Real-time updates to patient information for continuity of care

Real-time control of both meters and operators

Enhances patient ID confirmation, reduces potential errors

Withstands new aggressive cleaners

Easy to use, easy to train

50 tests after 4 hour recharge

Synchronized software and functionality

Helps to streamline nursing workflow

Captures manual tests to the electronic patient record

Flexible bi-directional connectivity options to LIS/HIS

Designed to easy to clean

Graphically driven menus

Rechargeable batteries

Software updates may be made centrally to all meters from cobas IT 1000 application

Central control of active test strip lots

Other test entry (OTE) captures and stores results for multiple POC tests

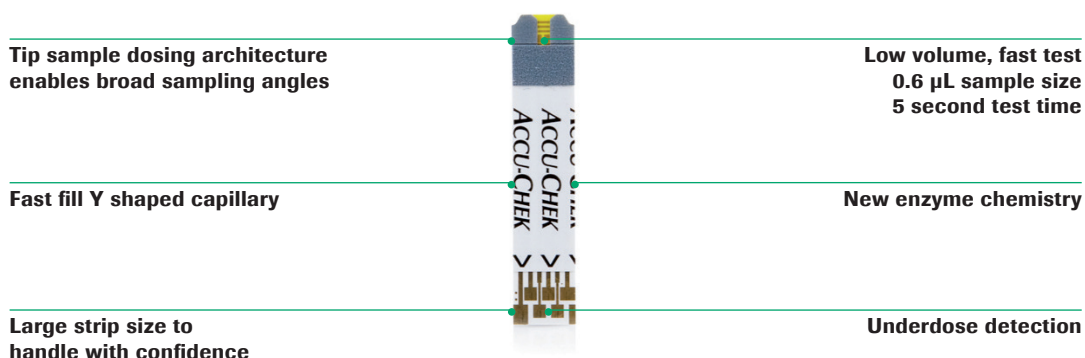
COBAS, LIFE NEEDS ANSWERS, ACCU-CHEK and ACCU-CHEK INFORM are trademarks of Roche.

©2014 Roche

Roche Diagnostics International Ltd
CH-6343 Rotkreuz
Switzerland
www.cobas.com

Accu-Chek® Inform II test strip

Advanced design for hospital needs



Physical design to ensure easy handling

- “Touchable” strip has protected dosing area
- Designed to minimize potential of cross contamination and ensure highest quality results

High contrast large dosing area

- Easy to target sample especially in low light settings during night shift
- Dosing site architecture allows multiple sampling application angles

Easy to use, designed for busy hospital workflows

Fast capillary fill

- “Y” shaped capillary window acts like a funnel to help draw blood into the strip quickly

5 second measuring time

- Results available faster, faster treatment decisions possible

Small blood sample

- The Accu-Chek Inform II test strips only require 0.6 µL. Better first time testing

Extensive strip and sample integrity checks

Fail-safes prevent inaccurate tests before sample taking

- The Accu-Chek Inform II system utilizes AC and DC impulses, this technology detects strips damaged by moisture and/or temperature
- Contacts detect scratched strips and can either compensate or reject them depending on the electrical resistance

Underdose detection

- Dedicated contacts signal the meter when there is enough blood in the strip to start measurement
- No under-sampling errors possible – peace of mind where sample volume is an issue
- Highest quality results ensured



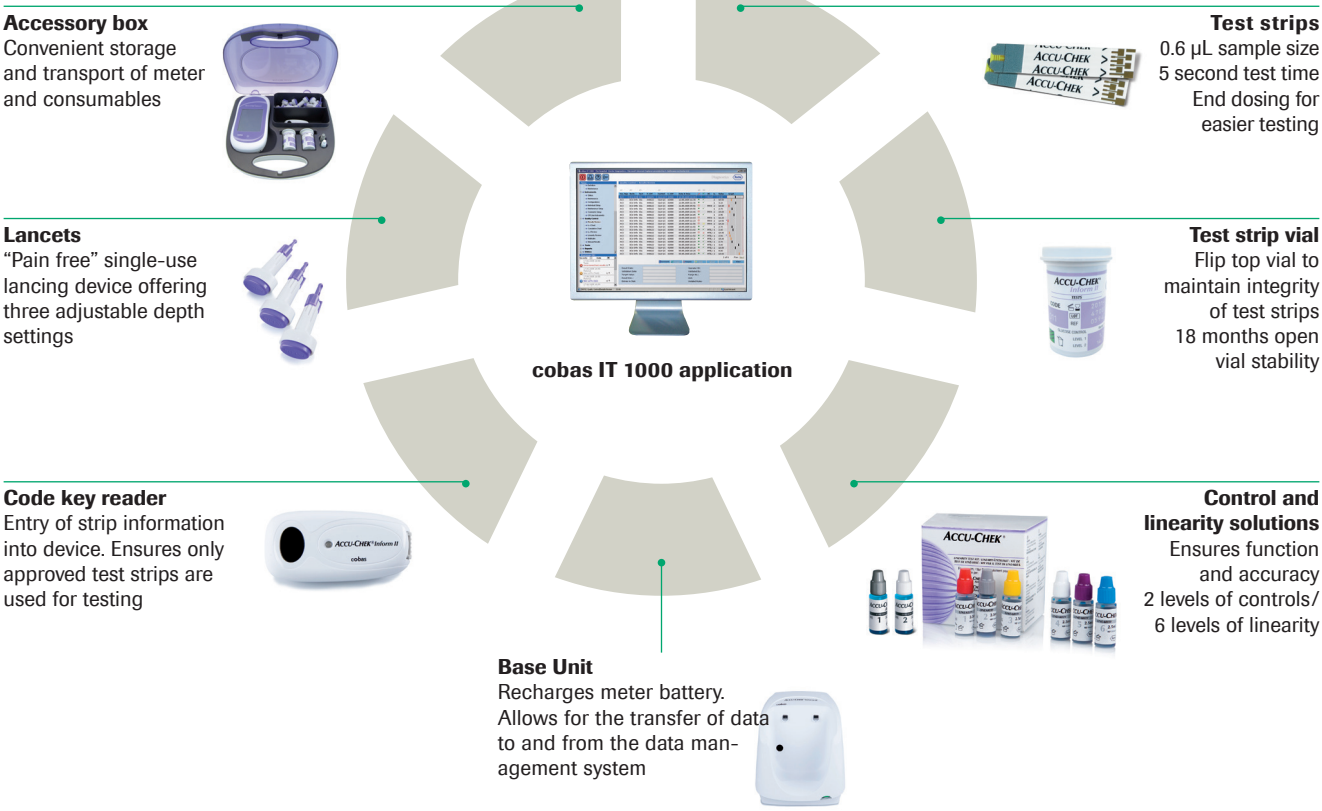
Life needs answers

Accu-Chek® Inform II test strip

Technical specifications

Specification	Test strip
Measurement principle	Modified glucose dehydrogenase (Mut. Q-GDH) - electrochemical detection technique
Range of measurement	10 to 600 mg/dL (0.56 to 33.31 mmol/L)
Measurement time	5 seconds
Operating temperature	8 to 44 °C (46 to 111 °F)
Sample volume	0.6 µL
Hematocrit range	10 to 65%
Altitude	< 3,094 meters above sea level (10,150 feet)
Sample types	Capillary, venous, neonatal, arterial
Calibration	IFCC plasma

Accu-Chek Inform II system components



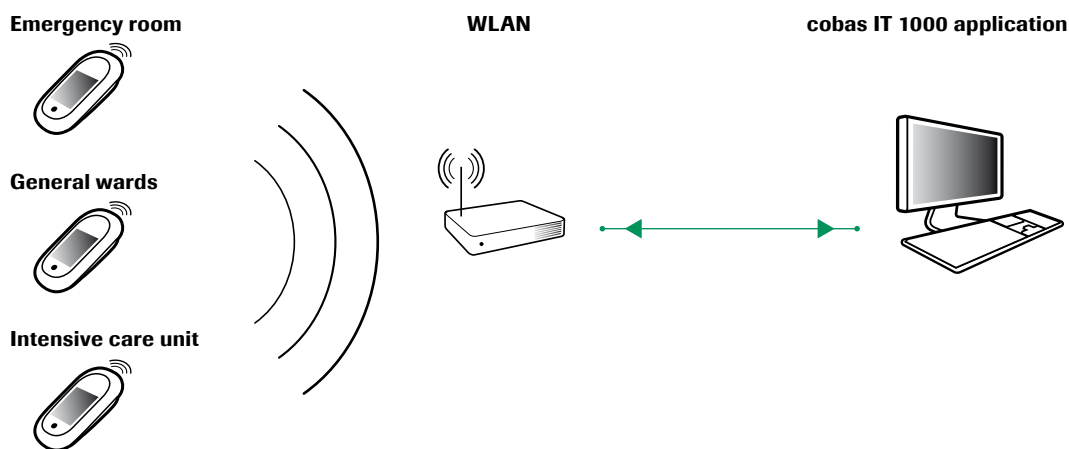
COBAS, LIFE NEEDS ANSWERS, ACCU-CHEK and ACCU-CHEK INFORM are trademarks of Roche.

©2014 Roche

Roche Diagnostics International Ltd
CH-6343 Rotkreuz
Switzerland
www.cobas.com

Accu-Chek® Inform II connectivity

Improved workflows with real time access



Connectivity tailored for the most challenging hospital networks

Complete central control

- Real time automatic management and control of instruments, operators, QC and glucose results
- Instruments guaranteed locked out if problem occurs.
- Automatic test result transfer
- All results actually get into the electronic medical record, No missing results, no time lag

Access to the bedside

- Improve nursing workflow by placing meters where needed without being limited by network point locations

Safe and secure data transmission

- Wireless standards utilized meet modern and secure Hospital protocol standards
- Supports 802.11.g/b wireless communications
- Multiple security protocols to ensure the integrity of patient data.

Easier to implement

- Uses the existing hospital wireless network – No additional costs, no additional wiring
- Compatible with modern hospital WiFi standards, allowing for easy implementation.
- Experienced Roche project managed installation to ensure seamless implementation

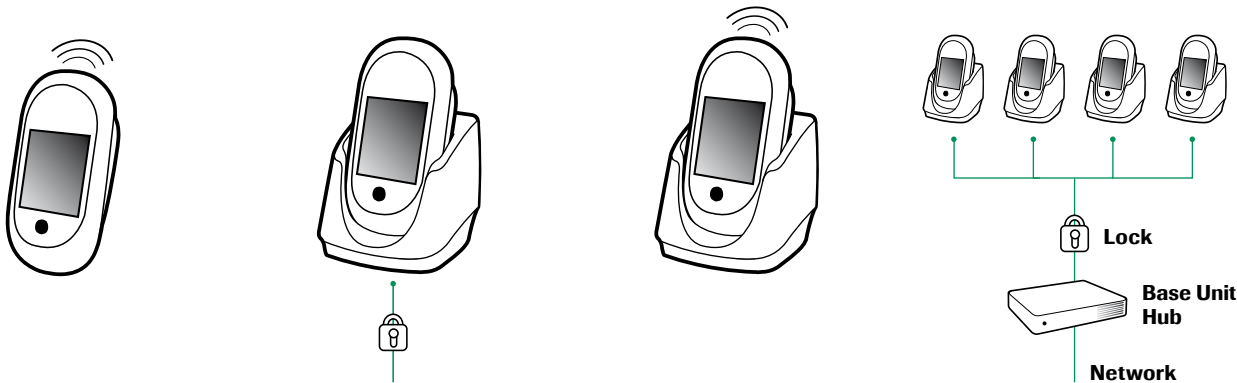


Life needs answers

Accu-Chek® Inform II Base Unit

Technical specifications

Specification	Base Unit	Base Unit Light	Base Unit Hub
Height	110 mm / 4.33 in	110 mm / 4.33 in	35 mm / 1.38 in
Width	118 mm / 4.65 in	118 mm / 4.65 in	169 mm / 6.65 in
Length	103mm / 4.06 in	103 mm / 4.06 in	127 mm / 5.00 in
Weight	615 g (with wallmount)	615 g (with wallmount)	470 g
User interface	LED (red, green, blue)	LED (red, green, blue)	LED (red, green, blue)
Operating temperature	3 to 50 °C / 37 to 122 °F	3 to 50 °C / 37 to 122 °F	3 to 50 °C / 37 to 122 °F
Input voltage/current	+ 7.5 V DC/1.7 Amp (max)	+ 7.5 V DC/1.7 Amp (max)	+ 7.5 V DC/1.7 Amp (max)



Wireless to network
 Supports 802.11.g/b wireless network communications

- WEP encryption is supported using 64 or 128 bit encryption
- Wi-Fi Alliance® certified for WPA™ and WPA2™ using TKIP or AES

Base Unit to network
 Base unit acts as physical docking and charging station and hardwire connection to the hospital network

Base Unit Light
 Intended to be used with wirelessly enabled Accu-Chek Inform II devices if used solely as a charging station or together with base unit hub

Base Unit Hub
 Intended to be used in conjunction with multiple Base Unit Lights, in order to: Provide connectivity where there are limited network drop points available

COBAS, LIFE NEEDS ANSWERS, ACCU-CHEK and ACCU-CHEK INFORM are trademarks of Roche. All other trademarks are the property of their respective owners.

©2014 Roche

Roche Diagnostics International Ltd
 CH-6343 Rotkreuz
 Switzerland
www.cobas.com

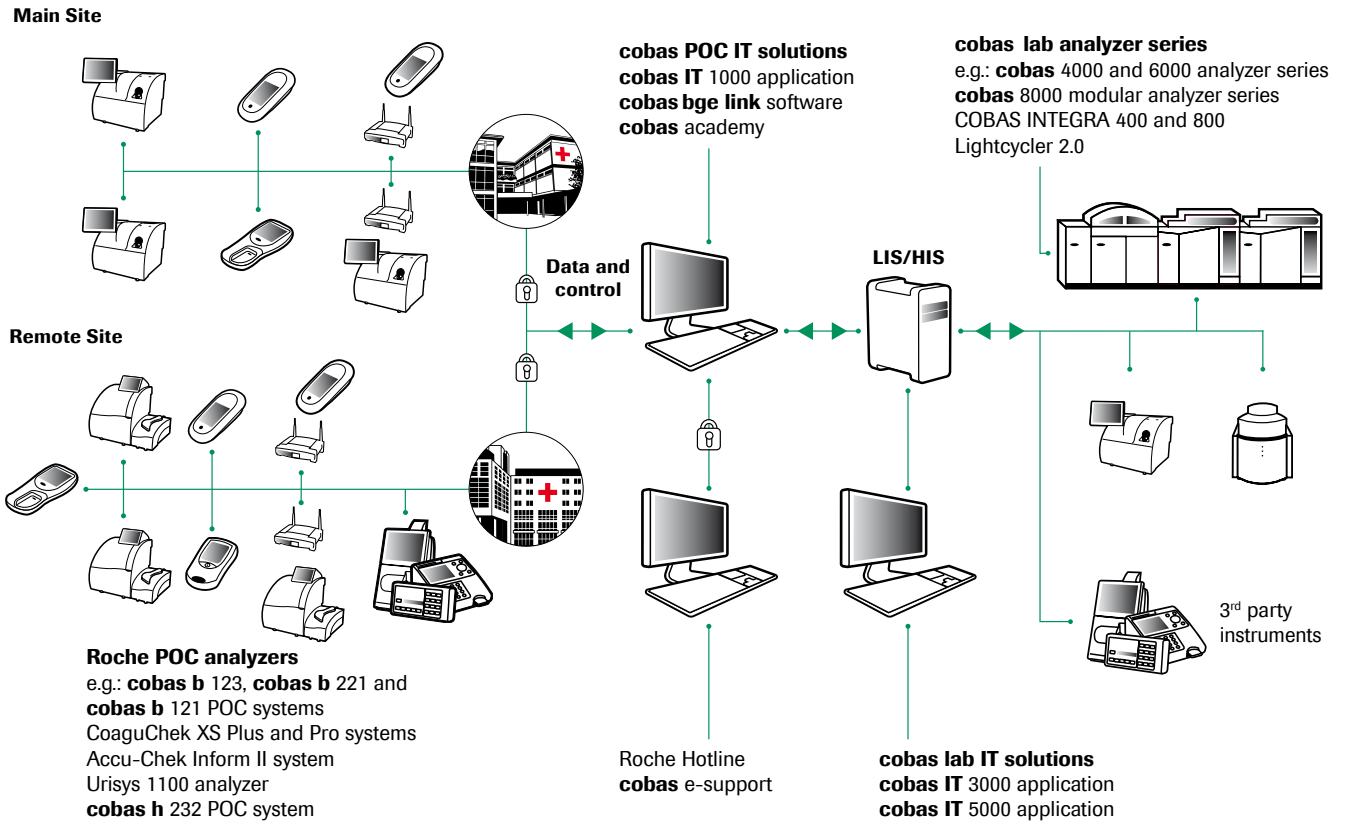


cobas[®] academy

Your knowledge and competence center



cobas academy: a module of the cobas POC IT solution



Confidence

- in the usage and condition of all analyzers
- in the reliability of results
- from a single point of control which connects all areas of the hospital
- that only trained users can run test on known instruments that have passed their quality control
- from the seamless integration of results into the LIS/HIS
- from the help in meeting regulatory and ISO standards
- from the reduced risk of transcription errors
- from the increased security through password protection

COBAS, COBAS B, COBAS H, LIFE NEEDS ANSWERS, ACCU-CHEK, COAGUCHEK, COBAS INTEGRA and URISYS are trademarks of Roche.

©2014 Roche

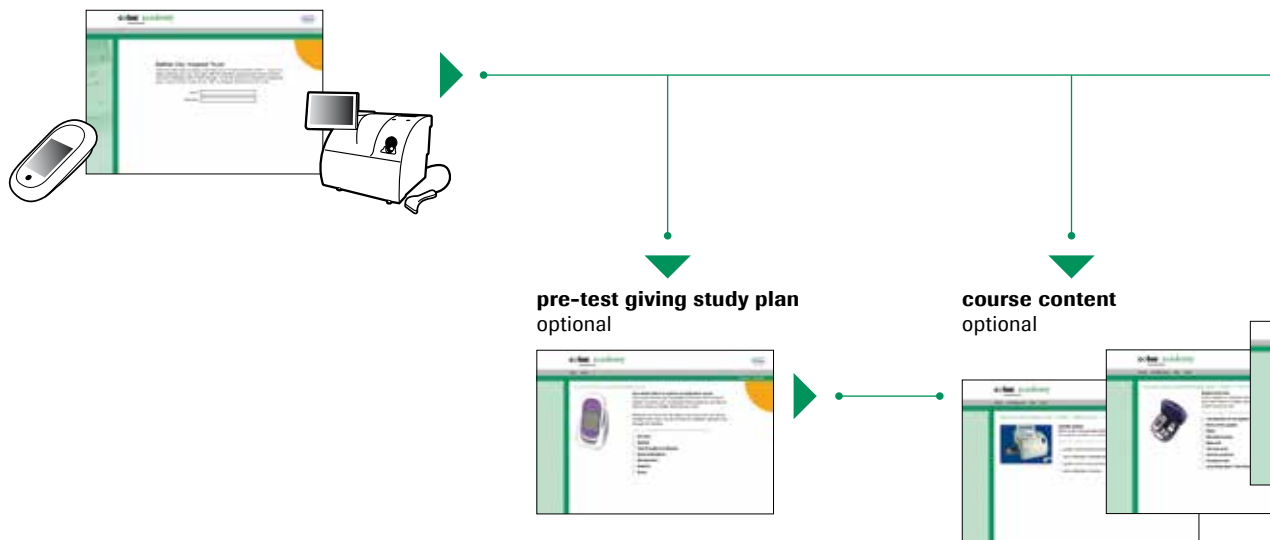
Roche Diagnostics International Ltd
 CH-6343 Rotkreuz
 Switzerland
www.cobas.com

cobas[®] academy

Your knowledge and competence center

cobas academy workflow

log on & choose course



cobas academy is

- a powerful customizable training and user management tool
- an integral part of every **cobas** POCT solution in combination with **cobas IT 1000** application
- a tool allowing username and password security protection for the advanced Roche PoC instruments
- a means of existing end users demonstrating their competence and knowledge
- a tool allowing you to deliver your content to your staff
- flexible, safe and cost effective

cobas academy means that you can

- offer on-line training courses for your Roche point of care devices
- tailor courses to reflect your organization's needs
- demonstrate compliance with regulatory and other requirements
- effectively manage the user recertification process without
 - time consuming face to face training
 - shift management and attendance issues
 - additional costs
- offer face to face training only to the minority who need it

cobas academy can be customized to

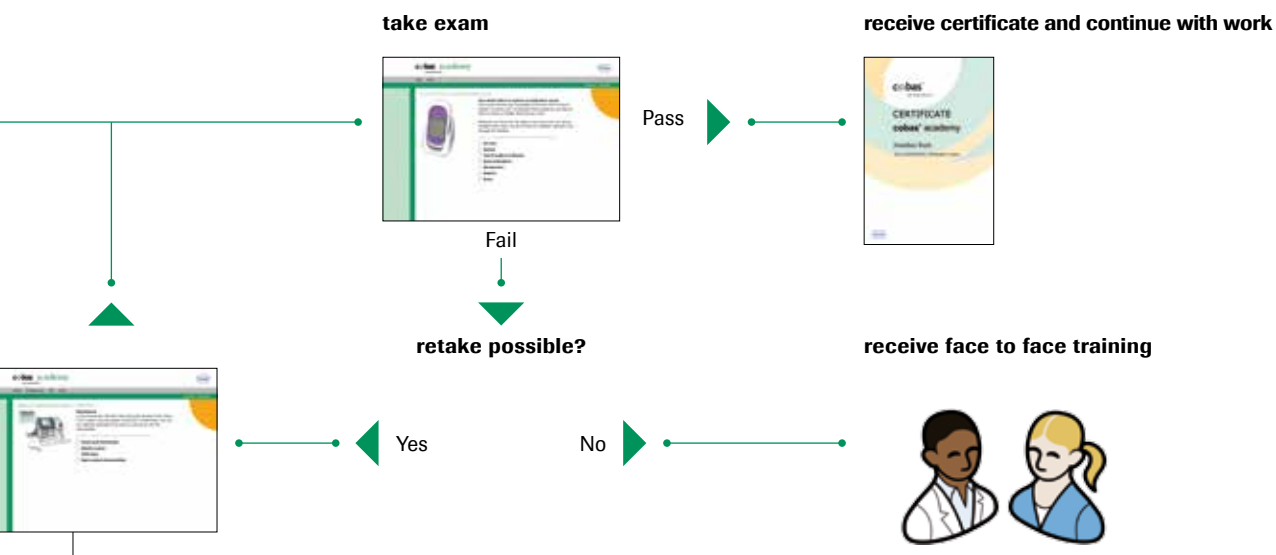
- your site's workflow
- cover all competence topics
- include
 - introductions
 - pass level for the exam
 - mandatory questions
- your content requirements
- include your logo to the certificate

Standard course

cobas academy shipped for installation

You sign off content when satisfied

Custom
proc



Usability

- Intuitive user interface requires no special training
- Integrated online help function
- User home page shows user's status at a glance
- Bookmark feature marks user's current position
- Pre-test can be either optional or mandatory

- **Simplicity to maximize acceptance by IT and users alike**

User Management

- Integrates with **cobas IT 1000** application
- Allows a single user database
- Automates the re-certification process
- Reduces complexity with a single log on for all advanced Roche Systems
- User certification reports in **cobas IT 1000** solution

- **Improved workflow efficiency by integration with other Roche PoC systems**

Security

- User password can be self managed to meet your IT regulations and legal requirements
- Unique exam is generated for every user to give managers confidence in user competence
- Exam designed to reflect your local requirements

- **Doing the basics so you don't have to**

